



Victoria



This map is aligned to Grid North (GN)  
True North is 0° 47' 33" West of GN  
Magnetic North is 10° 58' East of GN  
and moves 0° 01' West each year

GDA 1994 MGA Zone 55

# Victoria Topographic Map

## CM\_A4P\_250K

Map created on 18/9/2020 for  
George.Mifsud@delwp.vic.gov.au

0 2 3 5 6 Kilometers

www.vicmaptopo.land.vic.gov.au

Map detail created 18/9/2020 at 1:250,000

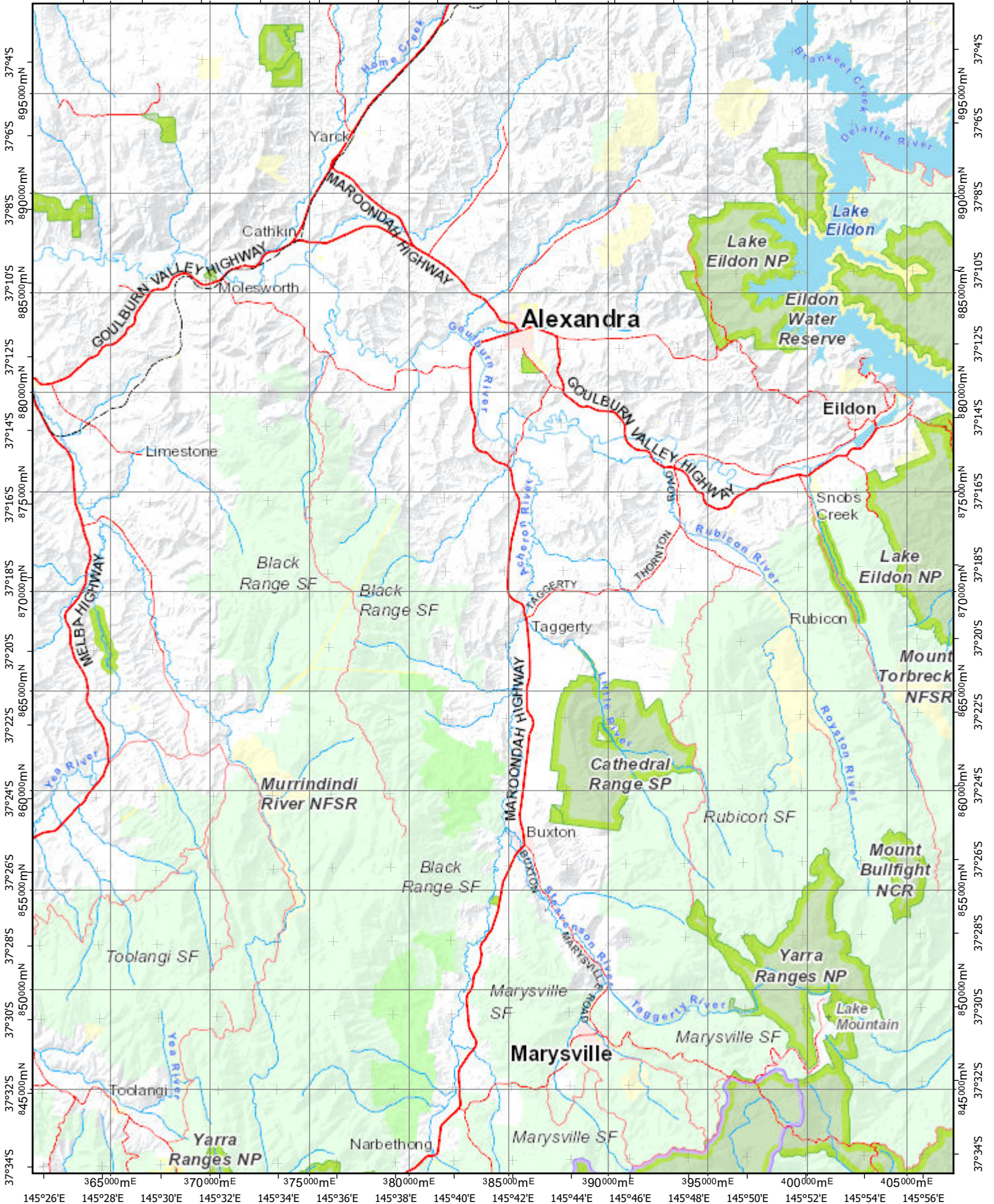


Copyright © The State of Victoria, Department of Environment, Land, Water and Planning 2020

This publication may be of assistance to you but the State of Victoria and its employees do not guarantee that the publication is without flaw of any kind or is wholly appropriate for your particular purposes and therefore disclaims all liability for any error, loss or other consequence which may arise from you relying on any information in this publication.

Refer to [http://services.land.vic.gov.au/Vicmap30K\\_info.pdf](http://services.land.vic.gov.au/Vicmap30K_info.pdf) for map legend

145°28'E 145°30'E 145°32'E 145°34'E 145°36'E 145°38'E 145°40'E 145°42'E 145°44'E 145°46'E 145°48'E 145°50'E 145°52'E 145°54'E 145°56'E  
365000mE 370000mE 375000mE 380000mE 385000mE 390000mE 395000mE 400000mE 405000mE



145°26'E 145°28'E 145°30'E 145°32'E 145°34'E 145°36'E 145°38'E 145°40'E 145°42'E 145°44'E 145°46'E 145°48'E 145°50'E 145°52'E 145°54'E 145°56'E

37°45' 37°44' 37°43' 37°42' 37°41' 37°40' 37°39' 37°38' 37°37' 37°36' 37°35' 37°34' 37°33' 37°32' 37°31' 37°30' 37°29' 37°28' 37°27' 37°26' 37°25' 37°24' 37°23' 37°22' 37°21' 37°20' 37°19' 37°18' 37°17' 37°16' 37°15' 37°14' 37°13' 37°12' 37°11' 37°10' 37°9' 37°8' 37°7' 37°6' 37°5' 37°4'