

# MACEDON RANGES SHIRE

## LOCALITY (SUBURB) NAMES AND BOUNDARIES

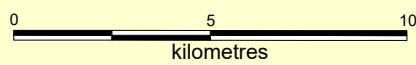
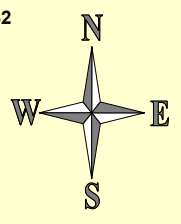


Prepared by Vicmap Data Services,  
Land Use Victoria, DELWP

Version 4.5  
March, 2020

Locality boundaries are determined by the municipal council  
and endorsed by the Office of Geographic Names.

Government Gazette:-  
10 June 1999, page 1366  
21 July 2011, page 1675  
3 December 2015, page 2547  
7 June 2018, page 1247  
13 February 2020, page 332



**LEGEND**

**ROMSEY**

Locality (Suburb) Boundary

**HUME**

Local Government Boundary