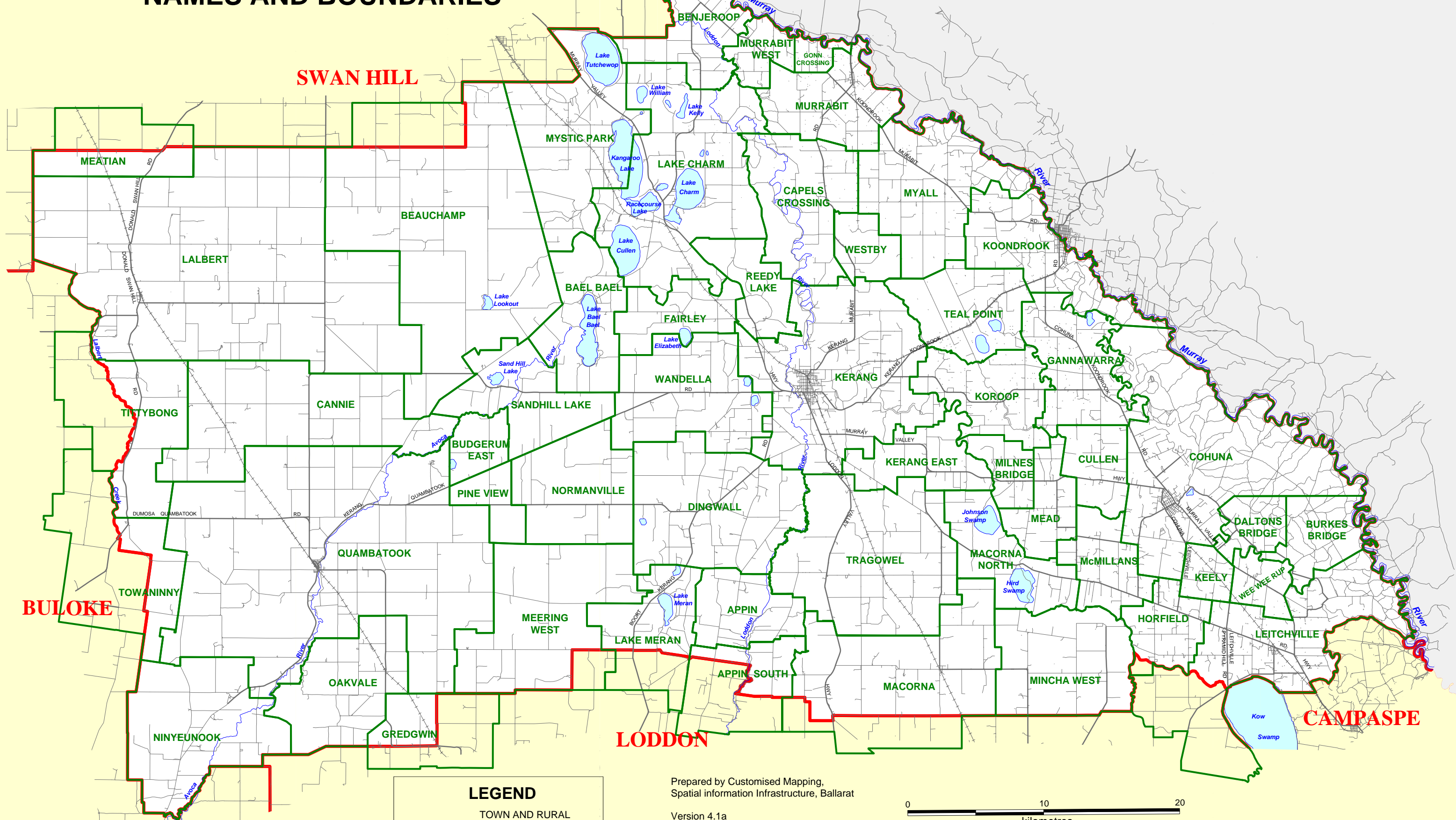


GANNAWARRA SHIRE

TOWN AND RURAL DISTRICT NAMES AND BOUNDARIES



LEGEND

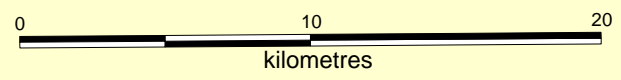
TOWN AND RURAL DISTRICT BOUNDARIES (defined as localities in Govt. Gazette)

LGA BOUNDARY

Prepared by Customised Mapping,
Spatial information Infrastructure, Ballarat

Version 4.1a
October, 2007

Government Gazette:-
17 June 1999, page 1414
4 October 2007, page 2267



© The State of Victoria, Department of Sustainability and Environment, 2007
This publication may be of assistance to you but the State of Victoria and its employees do not guarantee that the publication is without flaw of any kind or is wholly appropriate for your particular purposes and therefore disclaims all liability for any error, loss or other consequence which may arise from you relying on any information in this publication.

Unless defined or depicted otherwise, where the suburb or rural district boundary follows a road, as a general principle the boundary is the centre of the formed road, centre of the median where two carriageways exist or centre of the reserve where there is no formation. Where following a watercourse, as a general principle the boundary is the centreline of the main channel.