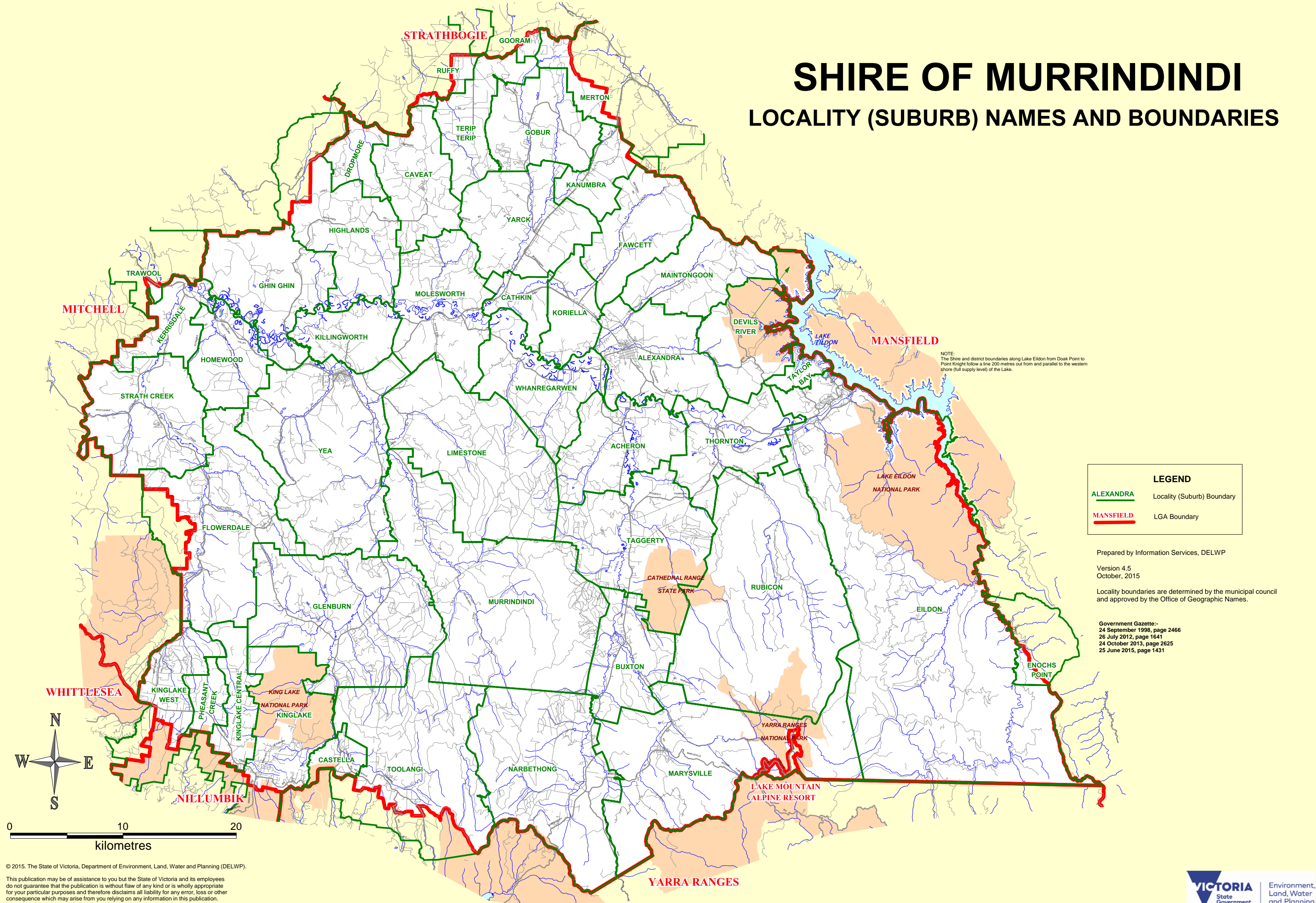


# SHIRE OF MURRINDINDI

## LOCALITY (SUBURB) NAMES AND BOUNDARIES



NOTE:  
The Shire and district boundaries along Lake Eildon from Doak Point to Point Knight follow a line 200 metres out from and parallel to the western shore (full supply level) of the Lake.

LEGEND	
<span style="color: green;">—</span> ALEXANDRA	Locality (Suburb) Boundary
<span style="color: red;">—</span> MANSFIELD	LGA Boundary

Prepared by Information Services, DELWP

Version 4.5  
October, 2015

Locality boundaries are determined by the municipal council and approved by the Office of Geographic Names.

Government Gazette:-  
24 September 1998, page 2466  
26 July 2012, page 1641  
24 October 2013, page 2625  
25 June 2015, page 1431